



**REGIONAL SPECIALISED METEOROLOGICAL CENTRE-TROPICAL CYCLONES, NEW DELHI TROPICAL
TROPICAL CYCLONE ADVISORY BULLETIN NO. 24**

FROM: RSMC –TROPICAL CYCLONES, NEW DELHI

**TO: STORM WARNING CENTRE, NAYPYI TAW (MYANMAR)
STORM WARNING CENTRE, BANGKOK (THAILAND)
STORM WARNING CENTRE, COLOMBO (SRILANKA)
STORM WARNING CENTRE, DHAKA (BANGLADESH)
STORM WARNING CENTRE, KARACHI (PAKISTAN)
METEOROLOGICAL OFFICE, MALE (MALDIVES)
OMAN METEOROLOGICAL DEPARTMENT, MUSCAT (THROUGH RTH JEDDAH)
YEMEN METEOROLOGICAL SERVICES, REPUBLIC OF YEMEN (THROUGH RTH JEDDAH)
YEMEN METEOROLOGICAL SERVICES, REPUBLIC OF YEMEN (THROUGH RTH JEDDAH) NATIONAL
CENTRE FOR METEOROLOGY, UAE (THROUGH RTH JEDDAH)
PRESIDENCY OF METEOROLOGY AND ENVIRONMENT, SAUDI ARABIA (THROUGH RTH JEDDAH)
IRAN METEOROLOGICAL ORGANISATION, (THROUGH RTH JEDDAH)
QATAR METEOROLOGICAL DEPARTMENT (THROUGH RTH JEDDAH)**

**TROPICAL CYCLONE ADVISORY NO. 24 FOR NORTH INDIAN OCEAN (THE BAY OF BENGAL AND
ARABIAN SEA) VALID FOR NEXT 120 HOURS ISSUED AT 2230 UTC OF 03.10.2021 BASED ON 2100
UTC OF 03.10.2021.**

Sub: Severe Cyclonic Storm ‘Shaheen’ over north coastal Oman

THE **SEVERE CYCLONIC STORM ‘SHAHEEN’** OVER GULF OF OMAN & ADJOINING OMAN COAST CONTINUED TO MOVE WEST-SOUTHWESTWARDS WITH A SPEED OF ABOUT 09 KMPH AND CROSSED THE OMAN COAST DURING 1900 TO 2000 UTC OF 3RD OCTOBER, NEAR LATITUDE 23.9 °N AND LONGITUDE 57.3 °E, ABOUT 120 KM WEST-NORTHWEST OF MUSCAT (41278) AS A SEVERE CYCLONIC STORM WITH A MAXIMUM SUSTAINED WIND SPEED OF 95-105 KMPH GUSTING TO 115 KMPH.

IT LAY CENTRED AT 2100 UTC OF 3RD OCTOBER, 2021 OVER NORTH COASTAL OMAN, NEAR LATITUDE 23.8°N AND LONGITUDE 57.2°E, ABOUT 380 KM WEST-SOUTHWEST OF CHABAHAR PORT (40898) AND 130 KM WEST-NORTHWEST OF MUSCAT (41278).

IT IS VERY LIKELY TO MOVE WEST-SOUTHWESTWARDS AND WEAKEN INTO A CYCLONIC STORM DURING NEXT 03 HOURS AND FURTHER WEAKEN INTO A DEEP DEPRESSION DURING SUBSEQUENT 06 HOURS.

FORECAST TRACK AND INTENSITY ARE GIVEN IN THE FOLLOWING TABLE:

Date/Time(UTC)	Position (Lat. °N/ long. °E)	Maximum sustained surface wind speed (Kmph)	Category of cyclonic disturbance
03.10.21/2100	23.8/57.2	90-100 gusting to 110	Severe Cyclonic Storm
04.10.21/0000	23.7/56.5	65-75 gusting to 85	Cyclonic Storm
04.10.21/0600	23.6/55.9	45-55 gusting to 65	Depression

AS PER INSAT-3D IMAGERY AT 2100 UTC, THE SYSTEM. ASSOCIATED BROKEN LOW/MEDIUM CLOUDS WITH EMBEDDED INTENSE TO VERY INTENSE CONVECTION OVER OMAN AND GULF OF OMAN. MINIMUM CLOUD TOP TEMPERATURE IS MINUS 78 DEG C.

THE ESTIMATED MAXIMUM SUSTAINED WIND SPEED IS 50 KNOTS GUSTING TO 60 KNOTS. THE SEA CONDITION IS HIGH TO VERY HIGH OVER THE SYSTEM AREA. THE ESTIMATED CENTRAL PRESSURE IS 989 HPA.

REMARKS:

THE SYSTEM IS VERY LIKELY TO MOVE WEST-SOUTHWESTWARDS AND WEAKEN INTO A CYCLONIC STORM DURING NEXT 03 HOURS AND FURTHER WEAKEN INTO A DEEP DEPRESSION DURING SUBSEQUENT 06 HOURS.

**(D R PATTANAİK)
SCIENTIST-F, RSMC, NEW DELHI**



OBSERVED AND FORECAST TRACK ALONGWITH CONE OF UNCERTAINTY OF SEVERE CYCLONIC STORM "SHAHEEN" OVER NORTH COASTAL OMAN BASED ON 2100 UTC OF 3RD OCTOBER, 2021



DATE/TIME IN UTC
 IST=UTC + 0530
L: LOW PRESSURE AREA
WML: WELL MARKED LOW PRESSURE AREA
D: DEPRESSION (17-27 KT)
DD: DEEP DEPRESSION (28-33 KT)
CS: CYCLONIC STORM (34-47 KT)
SCS: SEVERE CYCLONIC STORM (48-63KT)
VSCS: VERY SEVERE CYCLONIC STORM (64-89 KT)
ESCS: EXTREMELY SEVERE CYCLONIC STORM (90-119 KT)
SuCS: SUPER CYCLONIC STORM (≥ 120 KT)

● LESS THAN 34 KT
 ○ 34.47 KT
 ● ≥ 48 KT
 — OBSERVED TRACK
 — FORECAST TRACK
 ● CONE OF UNCERTAINTY
AREA OF MAXIMUM SUSTAINED WIND SPEED:
 ■ 28-33 KT (52-61 KMPH)
 ■ 34-49 KT (62-91 KMPH)
 ■ 50-63 KT (92-117 KMPH)
 ■ ≥ 64 KT (≥118 KMPH)

IMPACT OVER THE SEA

MSW (knot/kmph)	Impact	Action
28-33 (52-61)	Very rough seas	Total suspension of fishing operations
34-49 (62-91)	High to very high seas	Total suspension of fishing operations
50-63 (92-117)	Very high seas	Total suspension of fishing operations
≥ 64 (≥118)	Phenomenal	Total suspension of fishing operations



OBSERVED AND FORECAST TRACK ALONGWITH QUADRANT WIND DISTRIBUTION OF SEVERE CYCLONIC STORM "SHAHEEN" OVER NORTH COASTAL OMAN BASED ON 2100 UTC OF 3RD OCTOBER, 2021



DATE/TIME IN UTC
 IST=UTC + 0530
 L: LOW PRESSURE AREA
 WML: WELL MARKED LOW PRESSURE AREA
 D: DEPRESSION (17-27 KT)
 DD: DEEP DEPRESSION (28-33 KT)
 CS: CYCLONIC STORM (34-47 KT)
 SCS: SEVERE CYCLONIC STORM (48-63KT)
 VSCS: VERY SEVERE CYCLONIC STORM (64-89 KT)
 ESCS: EXTREMELY SEVERE CYCLONIC STORM (90-119 KT)
 SuCS: SUPER CYCLONIC STORM \geq 120 KT)

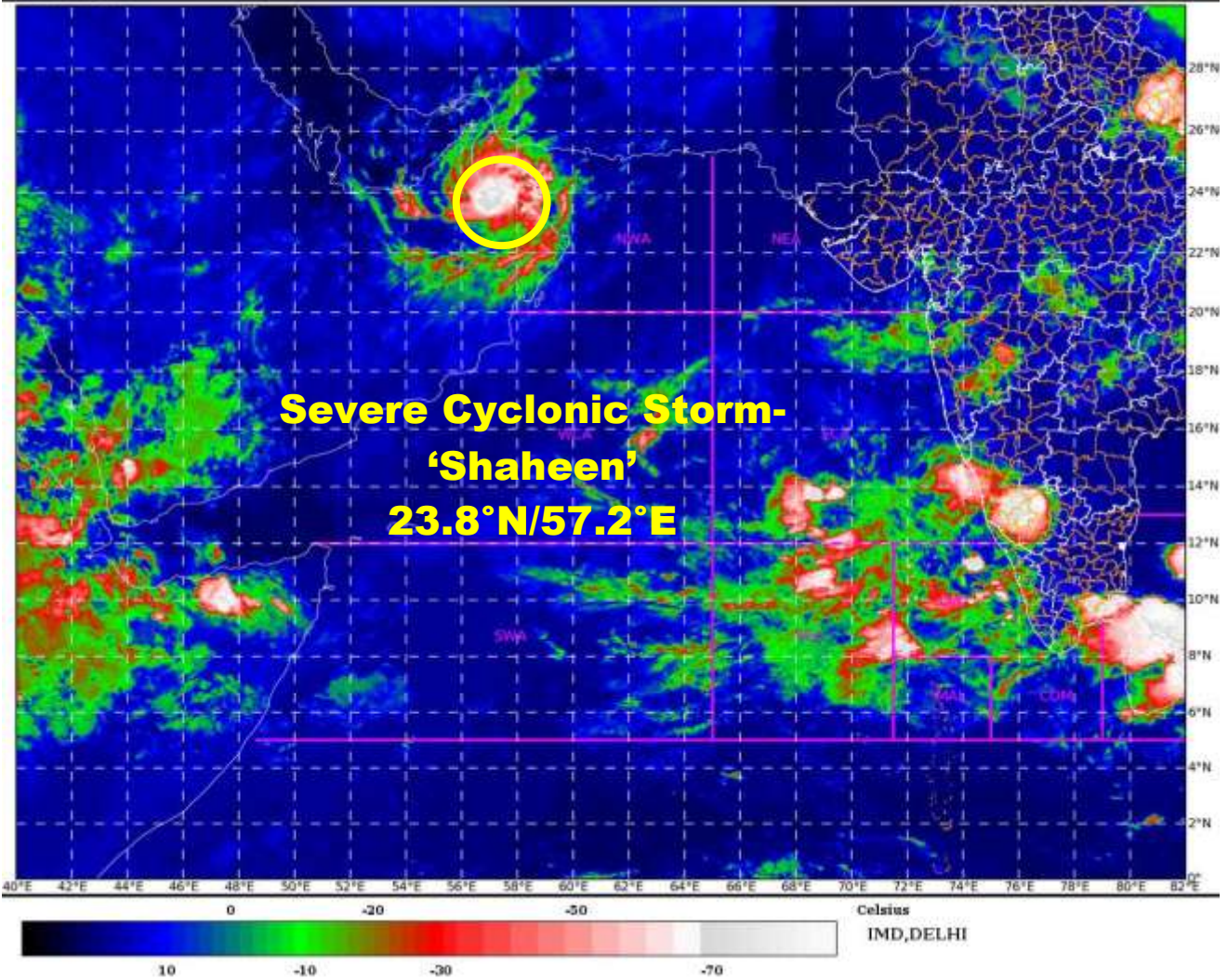
● LESS THAN 34 KT
 ○ 34-47 KT
 ● \geq 48 KT
 — OBSERVED TRACK
 — FORECAST TRACK
 — CONE OF UNCERTAINTY
 AREA OF MAXIMUM SUSTAINED WIND SPEED:
 ■ 28-33 KT (52-61 KMPH)
 ■ 34-49 KT (62-91 KMPH)
 ■ 50-63 KT (92-117 KMPH)
 ■ \geq 64 KT (\geq 118 KMPH)

IMPACT OVER THE SEA

MSW (knot/kmph)	Impact	Action
28-33 (52-61)	Very rough seas	Total suspension of fishing operations
34-49 (62-91)	High to very high seas	Total suspension of fishing operations
50-63 (92-117)	Very high seas	Total suspension of fishing operations
\geq 64 (\geq 118)	Phenomenal	Total suspension of fishing operations

SAT : INSAT-3D IMG
IMG_TIR1_TEMP 10.8 um
ARABIAN_SEA

03-10-2021/(2030 to 2056) GMT
04-10-2021/(0200 to 0226) IST



PROBABILITY OF CYCLOGENESIS (FORMATION OF DEPRESSION):NIL: 0%, LOW: 1-25%, FAIR: 26-50%, MODERATE: 51-75% AND HIGH: 76-100%
This is a guidance Bulletin for the WMO/ESCAP Panel Member countries,. Please visit respective National websites for Country specific Bulletins